



Newsletter #39
Pandemic issue #3

May 2021
Are we having fun yet?

Incorporated 1999

The Glasco Community Foundation was created to help friends of Glasco work to preserve and maintain community assets.

The assets we celebrate include our built environment, history and the people of Glasco.

Community Asset #1: The Built Environment
Main Street has changed in recent weeks. We lost the Lott & Stine building because it was too far gone to save. It was built after the 1911 fire. The gap feels like a missing front tooth. In the lot next to the Corner Store, a public pavilion has come together and is an asset for the downtown. It will be used more as the temperatures allow.

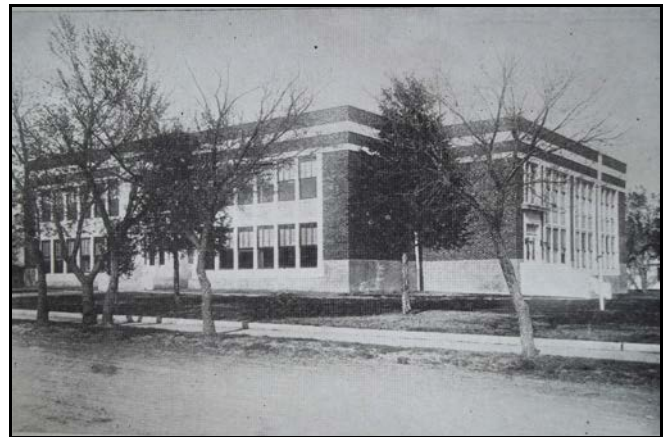


The Pavilion Christmas lights added to the downtown decorations.

Community Asset #2: Our History

We are living with the history of the 1871 incorporation of Del Ray as a town. The railroad was coming soon which made getting supplies easier. Del Ray became Glasco in 1878 and we are honoring the sesquicentennial of our town's beginning. Officially, we will be 150 years strong in July 2021. You can find a few historical photos at www.glascokansas.org. The *Glasco Sun/Delphos Republican* is printing historical articles relating to Glasco and other items of interest from 1921 since that is when the Glasco Rural High School was built.

On March 25, 1920, the vote for \$30,000 in bonds to build a school, passed with 367 yes votes to 133 nays.



Glasco Rural High School built in 1921

The board consisted of L.F. Davidson, chairman; Mrs. E.E. Butler, secretary; Col W.H. Harper, director; H.A. Lott, clerk and Martin Butler, treasurer.

Community Asset #3: Our People

The Glasco Community Foundation continued with the Walter Wolf Historical Lecture series in March when Steve Richardson of Cawker City presented a program on his book: ***The Homestead Years in the Solomon Valley***. We enjoyed having a program that continues the tradition of honoring local historian Squeak Wolf.



Steve Richardson sharing the history of the Solomon Valley and Cawker City, Kansas.

The Glasco Community Foundation was created to support civic, cultural and recreational activities that promote a quality of life leading to the continued existence of the Glasco community.

*The Christmas season brought fun, food and fellowship, as best we could do during a pandemic. The lighting of the park, gazebo and downtown was a comforting reminder of Christmas cheer. The Corner Store shared coffee and treats each Tuesday in December and we all enjoyed music from Phyllis Struble on the piano one afternoon.

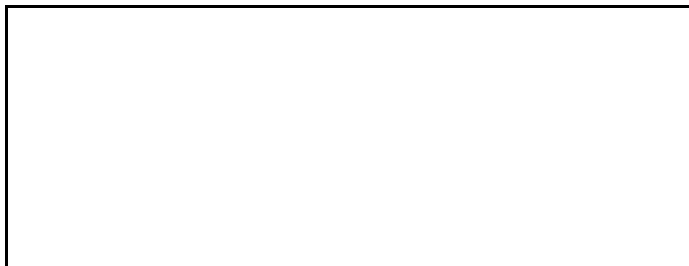
*At the GCF Annual Meeting on Jan 16, 2021, we conducted the required business and then moved on to the theme of the day: **Early Glasco History**. Much of it was provided by articles written by Charles Studt and Clarence Paulsen.



Pat, Dorothy, Jean and Charles read a dramatic skit from a shooting incident in Glasco in 1883.

*The Farmers Market continues on Tuesdays. New vendors welcome. And cinnamon rolls – we need cinnamon rolls!

*Glasco native Marietta Brown’s handiwork was a featured display during the winter. Bold, bright crocheted bed coverlets, hats, slippers and pillows made for a vibrant display.



Crocheted Bed Covering

*A grant through the River Valley Extension Office provided a Blessing Box, installed last fall in the doorway of the Biggs building. The contents are ever changing and available to everyone. The Corner Store also maintains the local Food Bank.



Blessing Box – Little Free Pantry

*We sponsored the Community Easter Egg Hunt along with Glasco Chamber Pride. Debbie Martin and the GGS 5th and 6th graders filled eggs with candy and hid them. We are grateful for their help to continue this Glasco tradition.

*Plans are coming together to have Main Street access to the second floor of the Corner Store. The stairway is on order – watch our progress!

*The Smejkal Café is being remodeled for the Glasco Recreation Board to use as a boutique/thrift shop - another building on Main being used – wonderful!

*The 2021 Glasco Community Foundation scholarship has been awarded to Glasco High senior Hana Cool.

The Glasco Community Foundation was established in June 1999 and represented a decision to work together to make a difference in Glasco. That mission continues. **June Dwyer, Jean Schmidt, Dorothy Martin, Bobbie Paulsen, Avis Henning, Jan McClellan, Charles Wilson, Patricia Coco and John Cooper** are current directors.

*A board member would welcome an invitation to visit with you about the Foundation. Estate planning that includes Glasco Community Foundation will help secure Glasco’s future.

www.glascockansas.org



Through the years, we have received significant gifts in memory of friends and family who have passed. These gifts bring to mind the special relationships forged with the community.

*During the past six months we have received memorial gifts on behalf of **Janice Sahlfeld, Steve Schrandt, Ocie Miller, Arthur Lavy, Emil Liedtke, Willie Collins, Albert Henning, Nancy Bryant, Andrea Oliver, Dorothy Spear, Larry Schulte and Denny McClellan.** Celebrating their lives through the work of GCF in Glasco is an honor for the Foundation.



Postcard mailed by Althea Larzalere to her sister in July 1944 and she writes that Bill is in France.

The GCF is a 501 (c) 3 non-profit organization; therefore *all contributions are tax deductible.*

****Please Note**** Our annual membership outreach is our primary means of funding. Our obligations at this time:

*to meet our 2021 budget of \$19,390 to maintain the Corner Store and programs there and to meet the financial obligations of utilities, insurance, building maintenance and taxes.

*to encourage community planning and support for historic preservation.

*to engage in historic preservation work on Main Street.

*to seek a sound fiscal basis for maintaining the Corner Store as a Rural Nutrition and Activities Center.

*to coordinate with the Glasco Community Recreation Board, Chamber Pride and the Free University.

*to develop Community Based Service Learning, building on the strengths of students and volunteers.

These all speak for GCF's very real role in meeting community needs in Glasco. We will continue to seek support for our efforts in the community, making wise use of resources provided by our members.

GCF is unique among Kansas Community Foundations, striving to provide direct programming to address community needs as well as supporting other community efforts.

[This May 2021 newsletter continues our membership outreach for 2021. Please continue with us in this venture. Your membership and donations are what make this work! We can do so much together.](#)



Glasco: looking southwest at Main and Railroad

This newsletter was produced by Jan McClellan and Dorothy Martin with circulation assistance from Pat Coco, June Dwyer and Jean Schmidt.

****Rhubarb Festival will be June 11th, 2021****

****Watch for Glasco High and Glasco, KS t-shirts on sale at the Corner Store Memorial weekend****

GLASCO COMMUNITY FOUNDATION

2021 MEMBERSHIP CONTRIBUTION

GCF is a 501(c)3 non-profit organization.
All contributions are tax deductible.

New Member _____ Renewing Member _____ Donation _____ Memorial _____

*Donations may also be given to honor someone who will be recognized as a GCF member.
Please provide the name to be recognized here:

*Memorials may be given in the name of friends and family members who have passed; their name will be added to our Memorial Board. Please provide name here:

MEMBERSHIP LEVELS

CIRCLE ONE

\$25 \$50 \$100 \$500 \$1,000 OTHER: _____

Name _____

Address _____

City _____ State _____ Zip _____

Signature _____ Date _____

Send completed form and check to:

Glasco Community Foundation, PO Box 572, Glasco, KS 67445

Thank you!

